

Lexington Hills

Summit highlights Palatine townhouse community

Model profile

BY SHERRY GIEWALD

Daily Herald Correspondent

The Summit model impresses visitors at Lexington Hills, a new community of 46 luxury townhouses that resides in a natural, country-like setting in Palatine.

The development by Lexington Homes offers three floor plans with three bedrooms, 2½ baths, basement and two-car garage. Because of the rolling terrain, some plans offer walkout and look-out basements.

"As a former 25-year resident of the area, I would live there if we hadn't moved to the city," said Jeff Benach, co-principal of Lexington Homes. "I'm in my 50s; the kids are long gone. The floor plans feature fresh new designs with many inclusions, and they're in a great location with gorgeous views of the forest preserve."

Situated off Lake-Cook Road a half-mile west of Rand Road, Lexington Hills sits near the Deer Grove Forest Preserve with jogging, biking and nature trails. Residents are minutes from the Deer Park Town Center, shopping, restaurants and the Century Cinema.

The Summit model home is the largest floor plan at 1,905 square feet with three bedrooms, 2½ baths, basement, rear patio and two-car garage. It appeals to couples, singles and families. The home is priced from \$328,490 and the model is furnished for an

empty-nester couple and their daughter who have scaled down from a larger home.

With interior design by Eleni Interiors of Naperville, warm gray, graphite and butterscotch prevail in this open floor plan, along with a transitional style that is upscale and sophisticated.

The main level features 9-foot ceilings and wide-plank hardwood flooring with a dark espresso stain that gives the space a rich look.

The fireplace wall gets attention with a flat molding that creates a geometric pattern, giving the home a custom look. Furnishings include upholstered pieces with nailheads and several mirrored and mosaic tile accents.

In the beautiful kitchen, elegance reigns with stainless steel appliances, cream glazed cabinetry with 42-inch uppers and quartz countertops. A dark gray subway tile backsplash is a bold contrast with the lighter colors.

Homeowners can entertain with ease with a wall-to-wall buffet counter and informal counter seating where bar stools bring in a modern, industrial look.

The same molding wall treatment appears in the dining/kitchen area where a round wood table set for six overlooks the outdoors.

Upstairs, the master suite sparkles with a vaulted ceiling emphasized by a chandelier and crown molding treatment along with beautiful silver end tables. A plush comforter beckons homeowners to a

good night's sleep in the calming space with light patterned draperies.

The private master bath features a corner tub with large window, dual sinks on raised-height vanities, walk-in shower with ceramic tile surround and flooring, and a private commode.

In the private and hall baths, wall coverings soften the with hard surfaces.

The second bedroom showcases white furnishings and

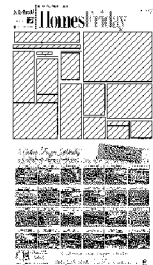
See **MODEL** on **PAGE 9** daughter's room.

The loft niche shows a built-in desk with upper cabinets that makes a convenient workspace for her while the third bedroom shows an office for him. His office features shallow painted beams that add warmth and interest along with a grass cloth wall and a sports theme.

Other designs for homebuyers to consider are the Sierra, priced from \$297,490 with 1,711 square feet, and the Mesa, from \$313,490 with 1,819 square feet.

To visit Lexington Hills, travel west on Lake-Cook Road, turn left on North Dee Lane, and the model is at 21 E. Moseley Road. Sales hours are 10 a.m. to 6 p.m. Monday through Saturday, and 11 a.m. to 6 p.m. Sunday.

For more information, call the sales office at (847) 818-0800 or visit online at www.lexingtonchicago.com.



Listing sheet

Price range: \$297,490 to \$328,490

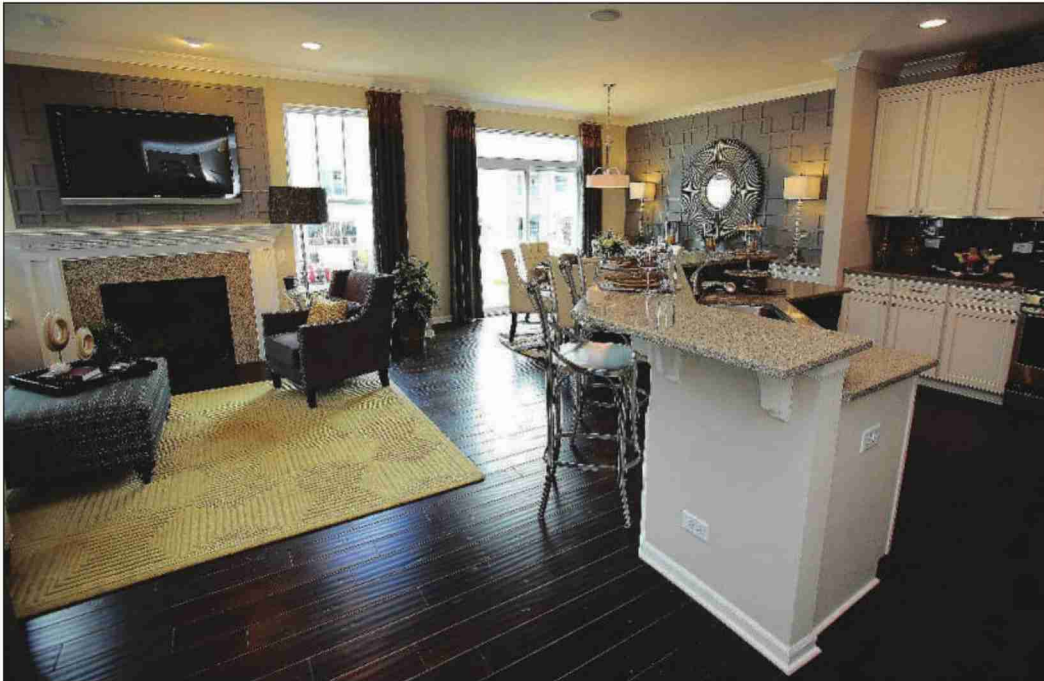
Square footage: 1,711 to 1,905

Schools: Lincoln Elementary and Sundling Junior High schools in Palatine Township Elementary District 15 and Palatine High School in Palatine-Schaumburg High School District 211

Parks: Palatine Park District



The second bedroom in the Summit model home is furnished for a daughter.



PHOTOS BY STEVE LUNDY/slundy@dailyherald.com

With interior design by Eleni Interiors of Naperville, the Summit model home at Lexington Hills in Palatine features a warm gray, graphite and butterscotch palette and an open floor plan.



The Summit is one of three models at Lexington Hills.



The second-floor loft niche is furnished with a built-in desk with upper cabinets, making a convenient workspace.



STEVE LUNDY/slundy@dailyherald.com

The master bedroom in the Summit model has a vaulted ceiling and chandelier.