

Mid-priced to luxury homes are being built in peaceful, serene settings

Building on success

Rock Creek Builders at Henning Estates is calling the long economic draught over. With more sales in 2013 than the previous three years combined, Henning Estates is again building ranch homes for a variety of families to take possession in 2014.

Located just west of Huntley, this environmentally sensitive community with vast expanses of open green space has experienced strong sales in McHenry County and 2014 is projected to be even better.

Providing seclusion and peacefulness, the community is designed to work with Mother Nature, and strict adherence to rules governing green space means that homes built on 1/3-acre homesites never back up to another home. Only prairie preserves, wetlands, ponds or mature stands of trees are visible from each home's backyard. To get a feel for the quality of the ranch homes offered in the community and the lifestyle there, Henning Estates has three decorated models open daily.

Rock Creek Development's mid-priced, semi-custom ranch homes provide 1,800 to 2,350 square-feet of stair-free living space. Prices start in the \$360s for a home with a full basement, but for an additional cost, they can be constructed with a lookout or walkout basement.

Luxury amenities included in the base price of homes in Henning Estates include high-end features like granite countertops, stainless steel appliances, hardwood flooring, full basements, ceramic floor tile, maple cabinetry, architectural significant ceilings and a comprehensive landscaping package.

Rock Creek's Newcastle model represents one of the three models open to tour at Henning Estates. This 1,803-square-foot, ranch home with two-car garage is base priced at \$367,900, and features a cedar-sided exterior. The Newcastle floor plan is designed to be attractive to a wide range of homeowner lifestyles. For empty nesters, the floor plan eliminates the need to climb stairs.

Within Henning Estates, Rock Creek

Homes offers homebuyers the opportunity to modify any available floor plan. Homes can be expanded, additional volume ceilings can be incorporated, and interior walls can be relocated. For homebuyers wishing to increase the living area of their homes, Henning Estates also offers finished basement option packages for its standard, lookout and walkout plans.

Residents of Henning Estates have easy access to Chicago via various road networks and train lines.

To reach Henning Estates, take Route 20 west from the I-90 Tollway for two miles and then turn right (east) on Church Road. The community entrance is on the north side of Church Road about 1/4 mile from Route 20. The three models and a sale's center are open daily from 10 a.m. to 5 p.m. or by appointment. For information call 847-338-3821 or visit

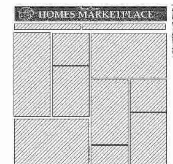
www.henningestates.com.

New plans announced

Chicago-based Lexington Homes has announced new plans for its Woodleaf at The Sanctuary Club community of luxury single-family homes in north-suburban Kildeer. The community offers one-half- to three-fourth- acre sites for 26 custom and semi-custom homes, all of which back up to private views of abundant mature trees, Kemper Lake, or both.

Buyers are being given the opportunity to build their dream home on a spacious site by working with the builder's portfolio of luxury home designs, which includes 40 plans from three different architects. Additionally, buyers can work with Lexington Homes to make modifications to any of the builder's floor plans or start from scratch with any of the three Lexington architect. Lexington's floor plans range from 3,300 to 5,000 square feet and prices start in the low \$700,000s.

All 26 homes at Woodleaf at The Sanctuary Club will feature all-natural brick-, stone- or cedar-type material on the exteriors and three- or four-car garages, many of which are side loading. Additionally, all homes will include Viking



appliances, high-end cabinets, site-finished hardwood floors, granite countertops, upgraded base and crown molding, tall ceilings, high roof pitches and full basements.

Jeff Benach, co-principal of Lexington Homes, says Woodleaf at The Sanctuary Club offers a unique building opportunity for luxury homebuyers that he hasn't seen before. "We're offering almost twice as many plans as available lots, plus buyers still have the option to design a home from scratch. It's an interesting custom/semi-custom/semi-production hybrid. But buyers are responding to it, as we've already sold three homes in our soft opening and will be breaking ground this spring on a model."

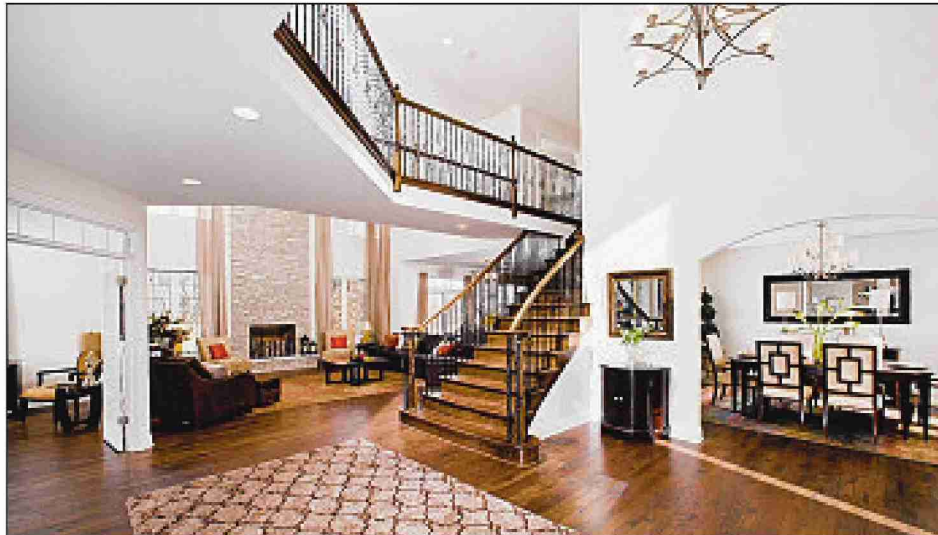
Another added bonus to building in the community is the ability to tap Lexington's full range of services. "We provide a full service experience that not only includes giving buyers unlimited design choices, but we also help them obtain financing

and building permits, plus oversee all construction," says Benach.

Benach says buyers are also responding to the community's serene setting. "No homes back up to another home, but rather to abundant mature trees or water features," he says. "What's more, it's the only community in the immediate area where all homes have both city water and city sewer."

Just minutes from shopping, dining and entertainment at Deer Park Town Center, Woodleaf at The Sanctuary Club offers easy access to recreation like nearby Kemper Lakes Golf Club and is close to major expressways. The community is located in the highly regarded Kildeer Countryside Community Consolidated School District 96.

For more information or to make an appointment to see the community, visit www.lexingtonchicago.com or call 847-531-6300.



All luxury homes at Lexington Homes' Woodleaf at the Sanctuary Club back up to private views.



Rock Creek Builders at Henning Estates offers mid-priced homes on 1/3 acre homesites.