

Chicago Tribune CHICAGO HOMES

7 Chicago Tribune | Chicago Homes | Section 6 | Friday, August 2, 2013 N

Chicago Tribune HOMES MARKETPLACE SPECIAL ADVERTISING SECTION



The luxury kitchen (left) at Wheaton 121 apartments is part of two decorated models open for viewing. A rendering (right) shows townhomes at Lexington Hills, one of two townhome developments coming to Palatine.

Luxury home, apartment options coming to suburbs

Models open at Wheaton luxury apartments

As construction nears completion at Wheaton 121, developer Morningside Group has opened two decorated models. Additionally, the development's upscale lobby, onsite leasing and management office, theater, and multi-use community room are also open for viewing.

"There has been a lot of excitement surrounding the opening of our model apartments because we actually had leased about 20 percent of the building based on floor plans alone," says David Strosberg, president of Chicago-based Morningside.

Models include a one-bedroom/one-bath plan and a two-bedroom/two-bath plan. Like all apartments at Wheaton 121, the models feature 9-foot ceilings, granite countertops in the kitchens and baths, stainless steel appliances, kitchen islands, wood floors, ceramic tile in the baths and in-unit washers and dryers.

Available floor plans at the 306-unit building include loft townhome, studio, one bedroom/one bath, two bedroom/one bath, two bedroom/two bath, and three bedroom/two bath plans. Residences range from 558 to 1,509 square feet and include private outdoor space.

There are 16 layout options available. Amenities include a heated pool, barbecue stations, fire pit, a dog run and bocce court. The building will also offer a community room, theater room and fitness center.

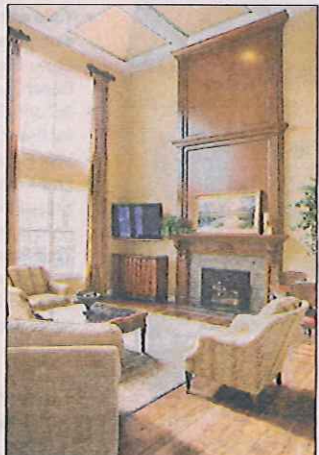
First move-ins will be in September, with rents starting at \$1,265 a month.

For more information, visit www.Wheaton121.com or visit the leasing center and decorated models located at 121 N. Cross St., Wheaton. The building is

open from 11 a.m. to 7 p.m. Monday through Friday; 10 a.m. to 5 p.m. Saturday; and from noon to 5 p.m. Sunday.

Custom single-family models for sale in Western Springs

With a new luxury home model planned for construction in Western Springs, Timber Trails Development has placed its existing Timber Trails models for sale. The professionally decorated 4,128- and 4,936-square-foot models will be sold with all draperies, wall paper, built-in bookcases and more included. These two-story homes are overflowing with upgrades and amenities such as custom fireplaces, hardwood flooring, stone or Corian countertops, full



Timber Trails models are for sale in Western Springs.

basements, three-car garages and vaulted ceilings.

One of the decorated models is the York, a 4,936-square foot home with four bedrooms, four and a half bathrooms, separate family, living and dining rooms, library or media room and a two-story entry foyer with curved staircase. The below market price is \$1.225 million.

The second decorated model for sale is the 4,128-square-foot, two-story Crawford home that has a price of \$750,000. This two-story home has a first-floor master bedroom suite, three additional bedrooms, three and a half bathrooms, loft, and a full, finished basement. This home is also filled with many upgrades and custom features.

In addition to the York and Crawford models, Timber Trails offers a variety of 1,971- to 5,062-square-foot luxury homes starting at \$499,000 and topping out above a million dollars (including home-site).

The builder also offers the opportunity to modify any available floor plan.

Timber Trails is located on the northwest corner of Plainfield Road and Wolf Road. The decorated models and sales center at 1017 White Pine Lane are open from 10 a.m. to 4 p.m. daily. For more information, call 708-783-1600 or visit www.timbertrailsdc.com.

New construction townhomes coming to Palatine

Two new townhome communities are coming soon to Palatine from Chicago-based Lexington Homes. Lexington Hills of Palatine will offer 41 townhomes in north Palatine at Lake Cook Road and Route 12. Lexington Oaks of Palatine will offer 15

townhomes near downtown Palatine. Sales for both communities are set to begin in mid-August.

Lexington Hills of Palatine will offer two-story townhomes in three floor plan designs with three bedrooms, two baths, basements and two-car garages. Some feature lookout or walkout basements, while all include large backyards with patios and/or rear decks. Based-priced from \$298,900, homes will measure 1,650 to 1,900 square feet.

Lexington Oaks of Palatine will offer two-story townhomes in two floor plan designs with two to three bedrooms, two baths, basements and two-car garages. One floor plan features a first-floor master bedroom suite. Both designs offer large backyards and decks. Based-priced from \$329,900, homes will measure approximately 1,684 to 1,817 square feet.

"Both of these communities are in great locations, whether you want the convenience and urban suburban feel of being in downtown Palatine or you want the more suburban, outdoorsy feel of being near the recreation of a major forest preserve," says Jeff Benach, co-principal of Lexington Homes.

Homes at Lexington Hills of Palatine will feature a high level of finishes. Options include adding fireplaces, bay windows and second-floor computer desk niches.

Homes at Lexington Oaks of Palatine also will feature many of the same high level of finishes and options.

To be added to the interest list or for more information about Lexington Hills of Palatine and Lexington Oaks of Palatine, call 847-818-0800 or visit www.lexingtonchicago.com.